

ASM-60

4-Wire Symmetrical VDSL-Based Modem



- ASM-60 is managed via an ASCII terminal connected to the front-panel supervisory port. The embedded menu-driven software allows to perform the following activities:
 - Data rate selection
 - Modem's status display
 - VDSL statistics collection
 - Real time alert of fault conditions.

FEATURES

- 4-wire VDSL-based modem, enabling symmetrical full duplex data transmission for ranges of up to 2.0 km (1.2 miles)
- Supports data rates of up to 10.24 Mbps (depending on application)
- Employs VDSL QAM line coding for better bandwidth utilization
- Supports Ethernet and high speed DTE interfaces
- Setup, control and monitoring via an ASCII terminal connected to the supervisory port
- Diagnostics include LED testing and VDSL performance monitoring

DESCRIPTION

- ASM-60, a VDSL-based modem, operates in full duplex over 4-wire 19–26 AWG lines.
- Transmitting data at 4.096 Mbps, 6.144 Mbps or 10.24 Mbps, ASM-60 eliminates the need for fiber optic cables in the last mile (local loop) or campus network environment.
- ASM-60 uses the VDSL QAM technology to improve the bandwidth utilization and ensure efficient transmission, even over poor quality lines.
- Two versions of the modem are available:
 - ASM-60/CO, for installation at central office
 - ASM-60/CPE, for installation at customer premises.
- DTE interfaces supported:
 - HSSI
 - Ethernet bridge (IR-ETH)
 - 10/100BaseT bridge with VLAN support (IR-ETH/QH)
 - IP router (IR-IP).

Table 1. Typical ASM-60 Ranges over 24 AWG STP Cat. 5 Lines

Data Rate [Mbps]	Range	
	[km]	[miles]
4.096	2.0	1.2
6.144	2.0	1.2
10.24	1.8	1.1

ASM-60

4-Wire Symmetrical VDSL-Based Modem

SPECIFICATIONS

LINE INTERFACE

- **Type**
4-wire, unconditioned dedicated lines (twisted pair), Cat.3 and Cat.5, 19 AWG to 26 AWG
- **Line Coding**
QAM
- **Range**
See Table 1
- **Output Level**
11 dBm
- **Impedance**
100Ω
- **Return Loss**
More than 15 dB
- **Carrier**
Constantly ON

DTE INTERFACE

- **Data Rate**
User-selectable: 4.096, 6.144 or 10.24 Mbps
- **Type**
 - HSSI: SCSI 50, female
 - IR-ETH (Ethernet bridge): RJ-45 or BNC coax
 - IR-ETH/QH (Ethernet/Fast Ethernet bridge with VLAN support): RJ-45
 - IR-IP (IP router): RJ-45

SUPERVISORY PORT

- **Interface**
V.24 (RS-232)
- **Type**
DCE
- **Format**
8 bits, no parity, 1 stop bit
- **Data Rate**
19.2 kbps
- **Connector**
9-pin, D-type female

GENERAL

- **Diagnostics**
Performance monitoring by collecting VDSL statistics
- **Indicators**
PWR (green) – Power
RTS (yellow) – Request to Send
DCD (yellow) – Data Carrier Detect
TD (yellow) – Transmit Data
RD (yellow) – Receive Data
ALM (yellow) – Alarm
TST (red) – Test
SYNC A/B (red/green) – Synchronization Line A/Line B
- **Power**
100 to 240 VAC (±10%),
50 to 60 Hz
- **Power Consumption**
6W

- **Physical**
Height: 44 mm / 1.7 in
Width: 215 mm / 8.5 in
Depth: 243 mm / 9.5 in
Weight: 1.0 kg / 3.5 lb
- **Environment**
Temperature: 0–50°C/32–122°F
Humidity: Up to 90%,
non-condensing

ORDERING

ASM-60/CO/#

4-wire symmetrical VDSL-based modem for central office installation

ASM-60/CPE/#

4-wire symmetrical VDSL-based modem for customer premises installation

Specify DTE interface:

HSSI for HSSI interface

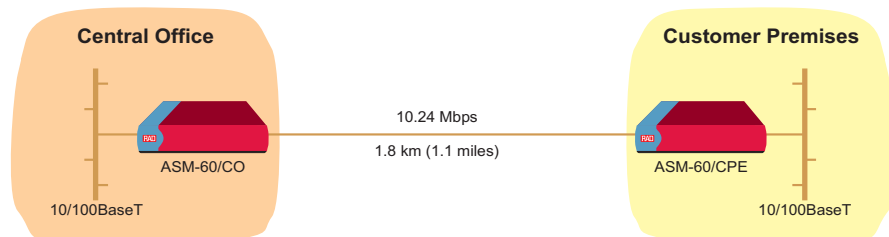
UTP for IR-ETH module with RJ-45 connector

BNC for IR-ETH module with BNC connector

UTP/QH for IR-ETH/QH module

IP for IR-IP module

APPLICATION



RAD

data communications

www.rad.com

- **International Headquarters**
24 Raoul Wallenberg Street
Tel Aviv 69719, Israel
Tel: (972) 3-6458181
Fax: (972) 3-6498250, 6474436
Email: rad@rad.com
- **U.S. Headquarters**
900 Corporate Drive
Mahwah, NJ 07430
Tel: (201) 529-1100
Toll free: 1-800-444-7234
Fax: (201) 529-5777
Email: market@radusa.com

145-100-07/03